

Collaborative Learning Templates

IDEAS FOR MODERN LEARNING ENVIRONMENTS



Canterbury Education Services Head Office

89 Nazareth Avenue, PO Box 414, Christchurch 8140. Phone: 0-3-338 4444, Fax: 0-3-338 4447, Email: wayne@cessl.org.nz, www.cessl.org.nz

Create great spaces for your students to flourish...

We hope these templates and ideas will encourage you and inspire you to

Create your own, customised,
modern learning environments

Creating a modern learning environment requires you to understand the different learning styles of students – so no more rows of desks, no more uncomfortable chairs.

What's required is different learning spaces for students who learn in different ways, like:

CREATIVE – ideally there's low spaces, seat for individuals, but close to others – these students like to operate where they can see others and what they are doing.

LOGICAL – these students look for a space that suits the activity – group work means a big table to congregate around or a conference style space, whereas for project or study, they want to be alone, so maybe a booth.

INTERPERSONAL – for this learning style – as much interaction is as possible, so sitting facing each other in groups is the requirement for best results.

CONTROLLED – these are the organised, structured learning students – space of their own is important, they're in control and it keeps them from being distracted.

So it's not one size fits all any more, and that's where CES can help you create the environment so all your students can flourish and achieve their full potential.

CES has an exciting range of furniture and equipment that reflects a new way of learning and is Ministry of Education compliant and what's more; it's attractive, flexible and your students and teachers will love working with it.

See also our 80 page School Furniture Catalogue

Canterbury Education Services Head Office

89 Nazareth Avenue, PO Box 414, Christchurch 8140. Phone: 0-3-338 4444, Fax: 0-3-338 4447, Email: wayne@cessl.org.nz, www.cessl.org.nz

Learning Space (A)

2



Deltoid Tables



-  Deltoid tables
-  PantoFlex chairs

Canterbury Education Services Head Office

89 Nazareth Avenue, PO Box 414, Christchurch 8140. Phone: 0-3-338 4444, Fax: 0-3-338 4447, Email: wayne@cessl.org.nz, www.cessl.org.nz

Learning Space (B)

3



“

The interchangeability of the furniture allows the students to take ownership and recreate the room. ”

MRS MacLENNAN (BREENS INTERMEDIATE)

- Standing benches 1200 x 600
- Eclipse tables 900mm round
- PantoFlex chairs

- Trapeze Ottomans
- Deltoid tables
- 1200mm round table

Canterbury Education Services Head Office

89 Nazareth Avenue, PO Box 414, Christchurch 8140. Phone: 0-3-338 4444, Fax: 0-3-338 4447, Email: wayne@cessl.org.nz, www.cessl.org.nz

Learning Space (C)

4



- | | | | |
|--------------------|--------------------|--------------------------|----------------------------|
| ▮ Deltoid chairs | ▮ Trapeze Ottomans | ▮ Mata adjustable chairs | ▮ Teacher's cupboard |
| ▮ Round 1200 table | ▮ Bean bags | ▮ Simple stools | ▮ Mobile teacher's station |
| ▮ Forum Moon table | ▮ PantoFlex chairs | ▮ Standing bench | ▮ Gratnell storage |

Canterbury Education Services Head Office

89 Nazareth Avenue, PO Box 414, Christchurch 8140. Phone: 0-3-338 4444, Fax: 0-3-338 4447, Email: wayne@cessl.org.nz, www.cessl.org.nz

Learning Space (D)

5



- | | | | |
|--------------------|--------------------|--------------------------|----------------------------|
| ▮ Deltoid chairs | ▮ Trapeze Ottomans | ▮ Mata adjustable chairs | ▮ Teacher's cupboard |
| ▮ Round 1200 table | ▮ Bean bags | ▮ Simple stools | ▮ Mobile teacher's station |
| ▮ Forum Moon table | ▮ PantoFlex chairs | ▮ Standing bench | ▮ Gratnell storage |

Canterbury Education Services Head Office

89 Nazareth Avenue, PO Box 414, Christchurch 8140. Phone: 0-3-338 4444, Fax: 0-3-338 4447, Email: wayne@cessl.org.nz, www.cessl.org.nz

Learning Space (E)

6



- ▮ Ottoman with back
- ▮ Floor pads
- ▮ Trapeze Ottomans

- ▮ Deltoid tables
- ▮ Round tables
- ▮ Standing bench

- ▮ Stools
- ▮ PantoFlex chairs

Canterbury Education Services Head Office

89 Nazareth Avenue, PO Box 414, Christchurch 8140. Phone: 0-3-338 4444, Fax: 0-3-338 4447, Email: wayne@cessl.org.nz, www.cessl.org.nz

Learning Space (F)

7



- ▮ PantoFlex chairs
- ▮ Deltoid tables
- ▮ Eclipse tables

- ▮ Bench seating

Canterbury Education Services Head Office

89 Nazareth Avenue, PO Box 414, Christchurch 8140. Phone: 0-3-338 4444, Fax: 0-3-338 4447, Email: wayne@cessl.org.nz, www.cessl.org.nz

Learning Space (G)

8



- Curved Ottomans with backs
- Round table 900mm
- Deltoid tables

- Trapeze Ottomans
- Benches
- Floor discs

Canterbury Education Services Head Office

89 Nazareth Avenue, PO Box 414, Christchurch 8140. Phone: 0-3-338 4444, Fax: 0-3-338 4447, Email: wayne@cessl.org.nz, www.cessl.org.nz

Open Learning Area (A)

9



- Eclipse tables
- ¼ Ottomans
- Round Ottoman

- Mata adjustable chairs
- Progress tables
- Standing benches

- Bean bags
- PantaFlex chairs

Canterbury Education Services Head Office

89 Nazareth Avenue, PO Box 414, Christchurch 8140. Phone: 0-3-338 4444, Fax: 0-3-338 4447, Email: wayne@cessl.org.nz, www.cessl.org.nz

Open Learning Area (B)

10



- ▮ ¼ round Ottomans
- ▮ Progress tables
- ▮ PantoFlex chairs

- ▮ 900 x 900 tables
- ▮ Laptop trolley
- ▮ Book/resource storage

- ▮ Ottoman with back
- ▮ Mata adjustable chairs
- ▮ Standing benches 1200 x 600

Canterbury Education Services Head Office

89 Nazareth Avenue, PO Box 414, Christchurch 8140. Phone: 0-3-338 4444, Fax: 0-3-338 4447, Email: wayne@cessl.org.nz, www.cessl.org.nz

Open Learning Area (C)

11



▮ 1/4 round Ottomans

▮ Progress tables

▮ PantoFlex chairs

▮ Oval Ottoman

▮ Laptop table

▮ Book/resource storage

▮ Ottoman with back

▮ Mata adjustable chairs

▮ Standing benches 1200 x 600

Canterbury Education Services Head Office

89 Nazareth Avenue, PO Box 414, Christchurch 8140. Phone: 0-3-338 4444, Fax: 0-3-338 4447, Email: wayne@cessl.org.nz, www.cessl.org.nz

Social Space (A)

12



- 900 x 900mm tables
- PantoFlex chairs
- Mata adjustable chairs

- Ottoman with back

Canterbury Education Services Head Office

89 Nazareth Avenue, PO Box 414, Christchurch 8140. Phone: 0-3-338 4444, Fax: 0-3-338 4447, Email: wayne@cessl.org.nz, www.cessl.org.nz

Breakout Space (A)

13



MS3 tablet chairs

Mata adjustable chairs

Progress table

Standing bench 1200 x 600mm

Canterbury Education Services Head Office

89 Nazareth Avenue, PO Box 414, Christchurch 8140. Phone: 0-3-338 4444, Fax: 0-3-338 4447, Email: wayne@cessl.org.nz, www.cessl.org.nz

Other Furnishing Ideas for Learning Environments. Open Learning Areas

14

See also CES's 80-page School Furniture catalogue



Kneeling tables



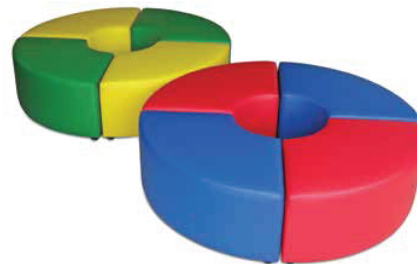
Laptop Trolleys



Simple Standing Table



Bean Bags



Quarter Ottomans



600mm Round Ottomans

Canterbury Education Services Head Office

89 Nazareth Avenue, PO Box 414, Christchurch 8140. Phone: 0-3-338 4444, Fax: 0-3-338 4447, Email: wayne@cessl.org.nz, www.cessl.org.nz

Open Learning Areas

15



Whiteboard Benches



Teaching Trolleys



Mata Adjustable Chairs



Progress Tables



Benches

Canterbury Education Services Head Office

89 Nazareth Avenue, PO Box 414, Christchurch 8140. Phone: 0-3-338 4444, Fax: 0-3-338 4447, Email: wayne@cessl.org.nz, www.cessl.org.nz



Pantoflex Chairs



Curved Ottomans with Backs



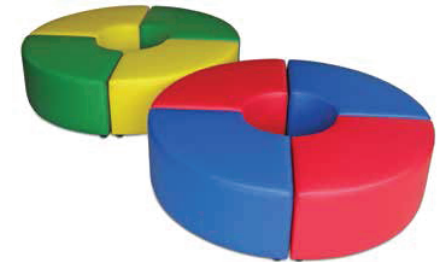
Progress Tables



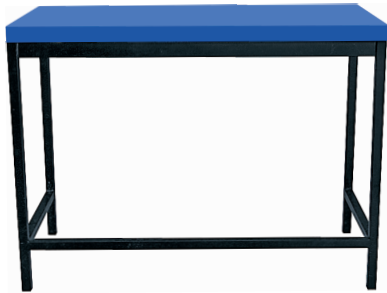
Laptop Trolleys



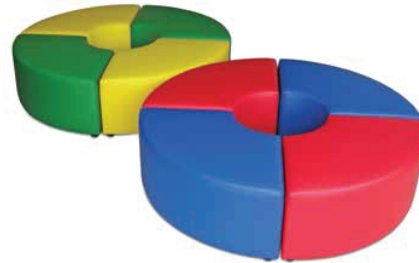
600mm Round Ottomans



Quarter Ottomans



Benches



Quarter Round Ottomans



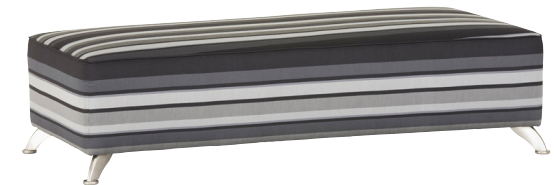
Mata Architectural Chairs



Alpha Simple Stools



Study Carrels



Rectangular Ottomans



Forum Moon Tables



Study Carrels



600mm Round Ottomans



Mata Adjustable Chairs



Graphics Desk



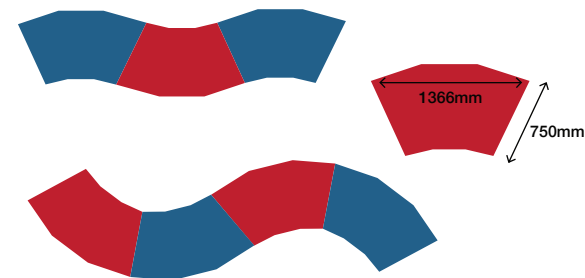
Tables, 1200mm x 800mm



Benches, 850mm high



Paper Storage



Conga Tables

Breakout Rooms

20



Adjustable Chairs



Board Table, 3-piece



Tablet Chairs

Canterbury Education Services Head Office

89 Nazareth Avenue, PO Box 414, Christchurch 8140. Phone: 0-3-338 4444, Fax: 0-3-338 4447, Email: wayne@cessl.org.nz, www.cessl.org.nz

Social Spaces

21



Mono Chairs



Mobile Rectangular Tables
600mm x 600mm on Wheels



Laptop Trolleys



Curved Ottomans (with Back)



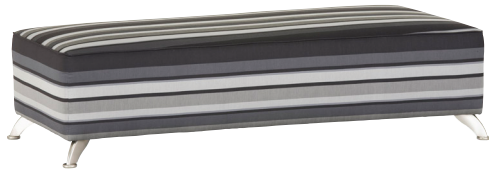
Rectangular Tables

Canterbury Education Services Head Office

89 Nazareth Avenue, PO Box 414, Christchurch 8140. Phone: 0-3-338 4444, Fax: 0-3-338 4447, Email: wayne@cessl.org.nz, www.cessl.org.nz

Small Work Group

22



Rectangular Ottomans



Bean Bags



Pantoflex Chairs



Progress Tables on Wheels



Mobile Rectangular Tables
600mm x 600mm on Wheels

Canterbury Education Services Head Office

89 Nazareth Avenue, PO Box 414, Christchurch 8140. Phone: 0-3-338 4444, Fax: 0-3-338 4447, Email: wayne@cessl.org.nz, www.cessl.org.nz

Other Furnishing Ideas For Collaborative Learning



Reverse Table with D Ends

- Overall 2230 x 1080mm
- Your choice of heights
- Reverse table 1790 x 1080mm
- D Ends 800 x 400mm
- Your choice of colours
- Shown in Sunflower & Melamine Purple
- Ideal collaborative table setting with up to 6 places



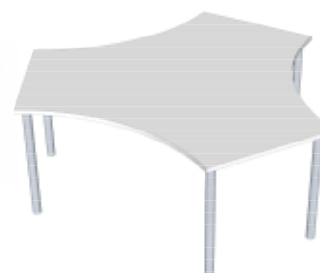
Standing Bench/Working Table

- Ideal for collaborative and individual controlled learners
- 2400 long x 800mm wide
- Bench 1200mm long
- Table 1200mm long
- On wheels with 4 way plug



3 Piece Table Set

- 2 x D Ends 1200 x 800mm
- 1 x Rec table 1200 x 1200mm
- Use with Castors for maximum flexibility
- Ideal for one on one or group work



Collaborative Table

- Seating area 1200mm
- Overall dimension 2035 x 1762mm
- 6 leg frame
- Use with rectangular table to create interesting spaces
- Ideal for group work collaborative management



Simple Standing Table

- Shelf under side
- 1000 x 800mm wide
- Height adjustable between 720 - 1100mm
- Castors nylon - ideal for any work surface
- Cable hole
- Power board underside
- Your choice of Blue or Lime tops

Canterbury Education Services Head Office

89 Nazareth Avenue, PO Box 414, Christchurch 8140. Phone: 0-3-338 4444, Fax: 0-3-338 4447, Email: wayne@cessl.org.nz, www.cessl.org.nz